

I

4:48 a.m.

slow, broad

$\text{♩} = 60$

III

Alto flute

Tpt. in B<sup>b</sup>

Cello

Timpani

Prepared Piano\*

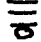

Fl.

Tpt.

Cello

Timp.

Piano

\*Preparations: Place rubber strips between  and strings. Aluminum rod above .

Lightbulb icon - Lights on.

Fl. *f* *ff*

Tpt. *f* *ff*

Cello *f* *ff* cease...

Timp. *pp* *p* *mp* *mf* *f* *ff* to TAM-TAM

Piano *f* *ff* *fff*

Fl. 10" 3 *mp* freely

Tpt.

Cello

Perc. tam-tam *fff* let decay

Piano *fff* *sva* Remove Preparations

(mm)

$\text{♩} = 120$

Fl.

Tpt.

Cello

Perc.

3

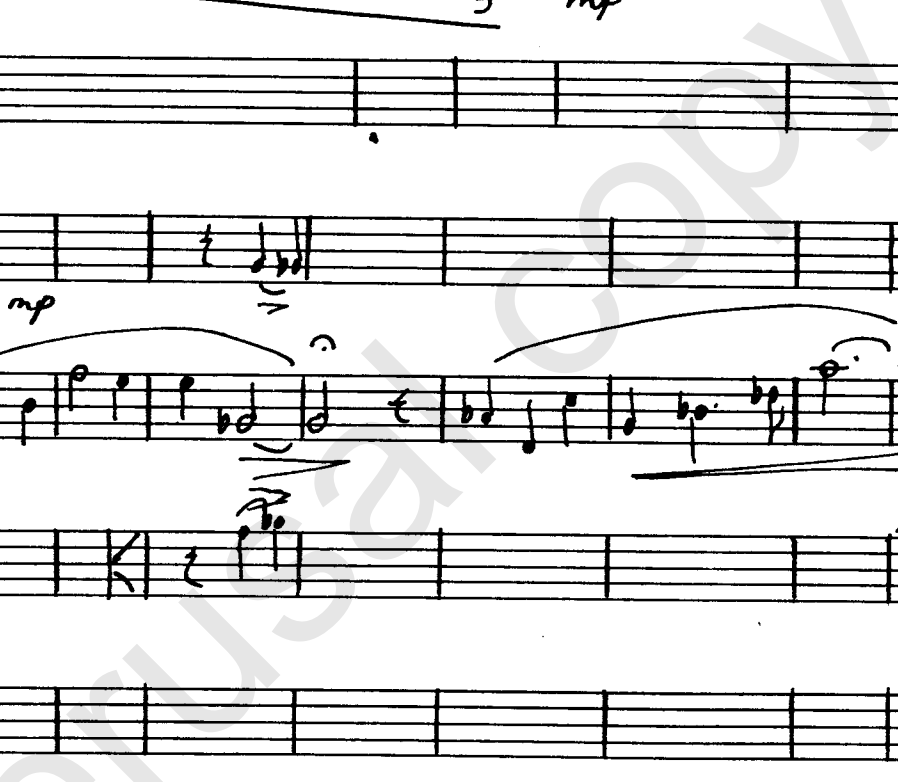
4

Fl.

Tpt.

Cello

Perc.



Fl.

Tpt.

Cello

Perc.

3

3

Fl. *cre-scen-do*

Tpt.

Cello *Pizz.* *f* *ARCO* *mf*

Perc. *Bongos* *mf*

Fl. *p* *mp* *mp*

Tpt. *mp*

Cello *p* *mp* *mp*

Perc. *tam-tam* *(to glock.)* *mp*

Piano *p* *mp* *mp*

Fl. *accel* *a ter*  
*mf* *mf* *CRESC... CEN... DO...*

Tpt.

Cello *8VA*  
*mf* *mf*

Perc. *Glock.*  
*mf*

Piano *f* *fff*

Cello *Brandy* *a tempo*

Perc. *3*

Piano *4* *fff*

Piano

Glock *let decay*

Piano